

## On-line trail: Arts and Crafts at the V&A

The Victoria and Albert Museum has one of the most wide-ranging and comprehensive public collections of Arts and Crafts in the world. Highlights include the William Morris collection and objects in every media by leading Arts and Crafts designers and makers from Britain, America, Germany, Austria, Norway, Russia and Japan. In addition, the Museum building has outstanding Arts and Crafts features. Nearly 150 objects from the V&A's collection will be included in the International Arts and Crafts exhibition, but there is much more to see.

Here you can take a virtual tour of some of the highlights on display in other parts of the Museum, as well as explore parts of the building and collections that are currently closed to the public as we work on our exciting FuturePlan scheme.

## BRITISH GALLERIES 1500-1900

### Rooms 122-125



The British Galleries display the V&A's unrivalled collection of British design and art from the Tudor period to the Victorian era. A comprehensive collection of designs in every media by William Morris, as well as objects by other leading British Arts and Crafts designers, are on permanent display. The Arts and Crafts Movement can be seen as a high point in British design, a moment when it was admired and copied around the world. The galleries present the movement within the wider context of 19th-century life and art in Britain, alongside developments in industrialisation, greater foreign trade and competition, and the discovery of other cultures.



#### **The Bullerswood Carpet**

William Morris (1834-96) and John Henry Dearle (1860-1932)

Made by Morris & Co., London

Britain

1889

Hand-knotted wool on a cotton warp

Museum no. T.31-1923



#### **'Acanthus' wallpaper**

William Morris (1834-96)

Printed for Morris & Co. by Jeffrey & Co.

Britain

1875

Colour print from wood blocks on paper

Museum no. E.496-1919



#### **St George's Cabinet**

Philip Webb (1831-1915) and William Morris (1834-96)

Made by Morris, Marshall, Faulkner & Co., London

Britain

1861-2

Painted and gilded mahogany, pine and oak, with copper mounts

Museum no. 341-1906



### Dish

William De Morgan (1839-1917)

Decorated at the De Morgan works, probably at Merton Abbey, Wandsworth, London. Blank made in Staffordshire

Britain

1880-5

Earthenware painted in ruby and yellow lustres

Museum no. 832-1905



### Dining room at The Magpie and Stump

Probably by Fleetwood Varley (1863-1942)

Britain

1901

Pencil and watercolour on paper

Museum no. E.1903-1990



### Hanging

Godfrey Blount (1859-1937)

Made at the Haslemere Peasant Industries, Haslemere, Surrey

Britain

1896

Linen, linen appliqué with satin stitch edging in linen thread

Museum no. T.173-1978



### Washstand

Probably designed by Leonard F. Wyburd for the Liberty Furniture Studio. Tiles designed by William De Morgan (1839-1917)

Britain

About 1894

Oak, with iron fittings and ceramic tiles

Museum no. W.19-1984



### Curtain

C.F.A. Voysey (1857-1941)

Made by Alexander Morton & Co., Darvel, East Ayrshire

Britain

1896-1900

Woollen doublecloth

Museum no. Circ.886-1967



### 'Omar' furnishing textile

Charles Harrison Townsend (1851-1928)

Made by Alexander Morton & Co., Darvel, East Ayrshire  
Britain

1896-1900

Jacquard-woven wool and cotton

Museum no. Circ.887-1967



### Table lamp

W.A.S. Benson (1854-1924)

About 1895

Made at the Benson factory, Chiswick, London

Britain

Brass and copper

Museum no. Circ.21-1961



### Clock

Mackay Hugh Baillie Scott (1864-1945)

Made by J.P. White, The Phygtle Works, Bedford

Britain

1900-5

Mahogany, inlaid with coloured woods, with copper face

Museum no. W.7-1953



### High-back chair

Charles Rennie Mackintosh (1868-1928)

Made in Glasgow

Britain

Designed 1897, probably made about 1900

Stained oak, with modern upholstery

Museum no. Circ.130-1958



### Embroidered collar

Jessie Newbery (1864-1948)

Made in Glasgow

Britain

About 1900

Silk ground, with appliqué of silk, embroidered in silk threads, glass beads and  
needlelace trimmings

Museum no. Circ.189-1953

## EUROPE AND AMERICA 1800-1900

### Rooms 8-9



The objects in these galleries show developments in the decorative arts in Europe and in America in the period 1800-90. They cover the full range of historical styles, from the Gothic Revival onwards, with Arts and Crafts objects from Austria, Germany, Norway and America displayed alongside examples of continental Art Nouveau. Many of the pieces won medals at the Exposition Universelle in Paris, 1900.



#### Door curtain

Frida Hansen (1855-1931)

Norway

1900

Tapestry woven in hand-spun and hand-dyed wool

Museum no. 1683-1900



#### Armchair

Lars Kinsarvik (1846-1925)

Norway

About 1900

Pine, carved and painted

Museum no. 4-1901



#### Chest of drawers

Adolf Loos (1870-1933)

Austria

About 1900

Maple, with deal carcass, oak panels and brass

Museum no. W.19-1982



### **Dish**

Thorvald Bindsbøll (1846-1908)

Made and decorated at Københavns Levarefabrik

Denmark

1895

Earthenware, with slip decoration and glazed

Museum no. C.162-1988



### **Three bowls**

Thorvald Bindsbøll (1846-1908)

Made by A. Michelsen, Copenhagen

Denmark

1900

Silver, partially gilded

Museum no. 1612 to 1615-1900



### **Dish and mug**

A.W. Finch (1854-1930)

Made at the Iris Workshops, Porvoo

Finland

1897-1900

Glazed earthenware

Museum no. Circ.758 to 759-1966



## THE GREEN DINING ROOM



The V&A was the first museum in Britain to provide public refreshment rooms, in a suite of three rooms on the ground floor near the original entrance. Designed in the 1860s by William Morris, Edward Poynter and James Gamble, they were used continuously as refreshment rooms until the outbreak of the Second World War, but then turned into storage. They were restored in the 1978 and are once again used for their original purpose.

The Green Dining room (as it became known) was designed and executed by William Morris's firm, Morris, Marshall, Faulkner & Co., in 1865-7. Although Morris is now recognised as one of the most important designers and thinkers of his day, he was then relatively unknown and the commission helped establish the reputation of the firm. The decorative scheme is predominantly blue and green, perhaps to produce a restful effect. The decorative plasterwork and cornice frieze were designed by Philip Webb. At eye level a series of painted panels of tree and fruit branches is interspersed with figurative panels by Edward Burne-Jones, representing the Zodiac or the Months. The stained glass panels were also designed by Burne-Jones.

## JAPAN AND KOREA

### Rooms 45-47

These galleries include many examples of the type of historical folkcrafts admired and collected by Yanagi Sōetsu and his fellow founders of the Mingei (Folk Crafts) movement in Japan in the period 1926-45.



#### **Merchant's shop chest**

Probably made in Kanazawa

Japan

1850-1900

Zelkova and deal, with clear lacquer finish, iron fittings and copper alloy door-pulls

Museum no. FE.7-1986



#### **Jar**

Korea

1750-1850, Chosŏn period

Porcelain, with underglaze blue

Museum no. C.83-1927



## FASHION

### Room 40

The V&A collection covers fashionable dress from the 17th century to the present day, with the emphasis on progressive and influential designs from the major fashion centres of Europe. Dress reform was a trend that ran parallel with the Arts and Crafts Movement. In an effort to free women from corsetry, it advocated a radically new approach to dress, examples of which can be seen in these newly refurbished galleries.



#### **Robe**

Britain or France

About 1900

Embroidered velvet, with satin and lace

Museum no. T.49-1962



## 20TH CENTURY

### Rooms 70-74

The story of the Arts and Crafts Movement and parallel international developments continues into the 20th century. The V&A's 20th Century galleries encourage thought and debate about how design, manufacture and marketing have been influenced by the development of machines, and how we distinguish art from craft, and craft from product design. These are issues that the Arts and Crafts Movement discussed and challenged.



#### **Dining chair**

Charles Sumner Greene (1868-1957) and Henry Mather Greene (1870-1954)

Made by James Hall, Pasadena

For the Robert R. Blacker house, Pasadena

USA

1907

Mahogany, with leather upholstery

Museum no. W.11-1985



#### **Wardrobe**

Ernest Barnsley (1863-1926)

Made at the Daneway House workshops, Gloucestershire

Britain

1902

Oak

Museum no. W.39-1977



#### **Curtain**

Made by Alexander Morton & Co., Darvel, East Ayrshire

Britain

About 1900

Silk, wool and cotton

Museum no. T.9-1988



#### **Bowl**

C.R. Ashbee (1863-1942)

Made by the Guild of Handicraft Ltd, London

Britain

1900-1

Silver, with enamel, set with a cabochon

Museum no. M.44-1972



### **Tankard**

Richard Riemerschmid (1868-1957)

Made by Reinhold Mekelbach pottery, Höhr-Grenzhausen  
Germany

1902

Stoneware, salt-glazed with enamel decoration

Museum no. C.33-1990



### **Vase**

Josef Hoffmann (1870-1956)

Made by the Wiener Werkstätte, Vienna

Austria

1905

Electroplated silver

Museum no. M.15-1982



### **Chair**

Otto Wagner (1841-1918)

Made by Thonet, Gebrüder

Austria

About 1904

Beechwood, bent and stained, with aluminium and plywood

Museum no. W.17-1982

## **FRANK LLOYD WRIGHT SPECIAL DISPLAY**

The largest commission of Frank Lloyd Wright's long career was the Imperial Hotel in Tokyo, designed and built in 1916–22. A landmark structure in Tokyo, the hotel marked a new beginning for Wright. He saw its design as a bridge between East and West and created an entire decorative scheme for the hotel, including furniture, carpets, a dinner service and this silver tea and coffee service and accompanying table. The service has been generously lent for display from a private collection and is on public view for the first time in many years, with a matching table.



Tea and coffee service with matching table

Frank Lloyd Wright (1867–1959)

For the Imperial Hotel, Tokyo

USA

1916–22

Silver with oak table

Lent by a Private Collection, America.

Courtesy of Bryce Bannatyne Gallery, Venice, California



Tea and coffee service with matching table

Frank Lloyd Wright (1867–1959)

For the Imperial Hotel, Tokyo

USA

1916–22

Silver with oak table

Lent by a Private Collection, America.

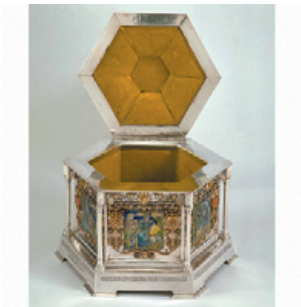
Courtesy of Bryce Bannatyne Gallery, Venice, California

## SILVER

### Rooms 65-68



Arts and Crafts silver is shown alongside contemporary Art Nouveau pieces and others in more conventional Victorian and Edwardian styles. The display shows how different styles varied in their inspiration, ornament and technique, and also how they appealed to a varied clientele.



#### **Casket**

Richard G. Hatton

Made by the Newcastle Guild of Handicraft, Newcastle upon Tyne  
Britain

1906-7

Silver, with gold, enamel and semi-precious stones

Museum no. Circ.376-1965



#### **Coffee service**

Georg Jensen (1866-1935)

Denmark

1909-14

Silver and rosewood

Museum no. M.76 to 78-1997



#### **Biscuit box**

Archibald Knox (1864-1933)

Made in Birmingham for Liberty & Co.

Britain

1901-2

Silver, decorated with enamel and mother-of-pearl

Museum no. M.25-1972



**Cup and cover**

Nelson Dawson (1859-1942)

Britain

1903-4

Silver, decorated with enamel

Museum no. M.30-1968

## **PAINTINGS**

### **Rooms 81-82**



The V&A has a superb collection of paintings, many of them the gift or bequest of 19th-century collectors. Together they offer a unique insight into Victorian picture-collecting practice. One outstanding donor was Constantine Ionides, who lived in the fashionable London suburb of Holland Park. He assembled a fine collection, with over 80 paintings, including portraits by the Renaissance painters Botticelli and Tintoretto, and Pre-Raphaelite works by Burne-Jones and Rossetti.



#### **'The Day Dream'**

Dante Gabriel Rossetti (1828-82)

Britain

1880

Oil on canvas

Museum no. CAI.3



#### **Grand piano**

Edward Burne-Jones (1833-98) and Kate Faulkner (active 1861-98)

Made by Broadwood & Co., London

Britain

1883

Oak, stained and decorated with gold and silver-gilt gesso

Museum no. W.23-1927



## THE GLASS GALLERY

Room 131



The V&A holds the National Collection of Glass. It includes more than 6000 pieces, from the Middle East, Europe and America, and illustrates the 4000-year history of glass, from the 2nd millennium BC to the present day. Displayed alongside glass of many techniques and ages, the Arts and Crafts glass stands out as for its fluid, natural forms.



### **Wine glass**

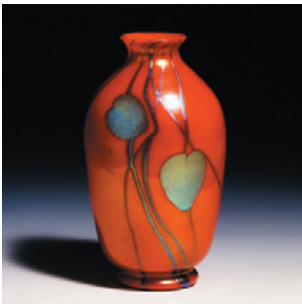
Britain

Made by James Powell & Sons, Whitefriars Glassworks, London

1876

Opal glass

Museum no. 544-1877



### **'Favrile' glass vase**

Louis Comfort Tiffany (1848-1933)

Made by Stourbridge Glass Co., Corona Glassworks, New York

For Tiffany & Co.

USA

1899

Glass, with metallic lustre

Museum no. 561-1899

## CERAMICS

### Rooms 132-145

The Ceramics collection is one of the cornerstones of the V&A. The collection ranges from ancient Egyptian products to modern studio pottery and industrially designed ceramics. British, European and American Art Pottery is represented alongside the work of Arts and Crafts practitioners Bernard Leach and Hamada Shōji.

These galleries are currently closed for refurbishment, but some relevant examples from the collection can be viewed here.



#### Vase

Hamada Shōji (1894-1978)

Made at the Leach Pottery, St Ives, Cornwall

Britain and Japan

1923

Stoneware, with painting in brown under a milky grey glaze

Museum no. C.411-1934



#### Bowl

Tomimoto Kenkichi (1886-1963)

Made in Tokyo

Japan

1912

Earthenware, painted in coloured enamels

Museum no. FE.66-1977



#### Tile panel

Bernard Leach (1887-1979)

Made at the Leach Pottery, St Ives

Britain

About 1939

Stoneware, painted and glazed

Museum no. C.49-1946



#### Bowl and stand

Made at the Ruskin Pottery, Smethwick

Britain

Probably 1920-9

Stoneware, with high temperature flambé glaze

Museum no. C.86-1981



**Vase**

William De Morgan (1839-1917)

Made at the Sands End Pottery, London

Britain

About 1889-98

Earthenware, painted in lustre with lead glaze

Museum no. C.414-1919



**Vase**

Made by the Rookwood Pottery, Cincinnati, Ohio. Decorated by Harriet Elizabeth

Wilcox

USA

1900

Glazed earthenware

Museum no. 1686-1900

## FRANK LLOYD WRIGHT

The architect Frank Lloyd Wright believed in the underlying unity of all the elements of a building. Insisting on totality, he designed the interior, furniture, metalwork, stained glass, ceramics, textiles, lighting, sculpture and murals for each project. Wright's early work, from the period 1890-1910, reflected the philosophies and aesthetics of the Arts and Crafts Movement.

The V&A's collection includes outstanding examples of Wright's designs. However, as part of our preparations for FuturePlan, the collection is not currently on display, though some highlights can be viewed here. In addition, a special display of a unique tea and coffee service will be presented in the 20th Century gallery during the run of the exhibition 17 March - 24 July 2005.

### Special Display Room 74



#### Tea and coffee service with matching table

Frank Lloyd Wright (1867-1959)

For the Imperial Hotel, Tokyo

USA

1916-22

Silver with oak table

Lent by a Private Collection, America. Courtesy of Bryce Bannatyne Gallery, Venice, California



The largest commission of Frank Lloyd Wright's long career was the Imperial Hotel in Tokyo, designed and built in 1916-22. A landmark structure in Tokyo, the hotel marked a new beginning for Wright. He saw its design as a bridge between East and West and created an entire decorative scheme for the hotel, including furniture, carpets, a dinner service and this silver tea and coffee service and accompanying table. The service has been generously lent for display from a private collection and is on public view for the first time in many years, with a matching table.



#### Office

Frank Lloyd Wright (1867-1959)

For the Kaufmann Department Store, Pittsburgh

USA

1937

Panelled room of swamp cypress plywood

Museum no. W.9-1974



#### Dining chair

Frank Lloyd Wright (1867-1959)

For the Ward-Willitts house, Highland Park, Illinois

USA

1902

Stained oak, with replacement leather upholstery

Museum no. W.4-1992



**Stained glass window**

Frank Lloyd Wright (1867-1959)

For the Avery Coonley Playhouse, Riverside, Illinois

USA

1912

Stained glass

Museum no. C.115-1992



**Table**

Frank Lloyd Wright (1867-1959)

For the William Fricke House, Oak Park, Illinois

USA

1902

Stained oak

Museum no. W.14-1981